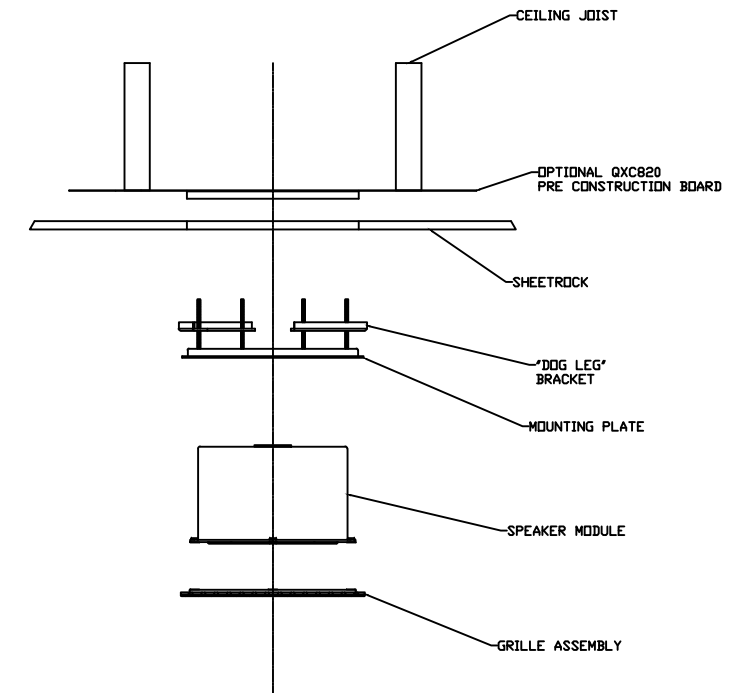
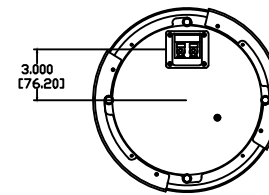
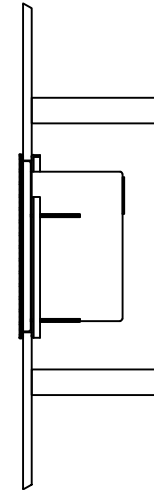
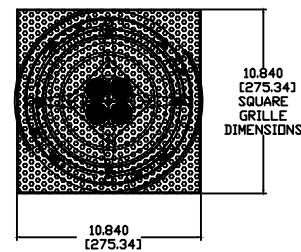
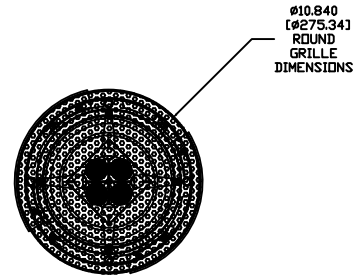
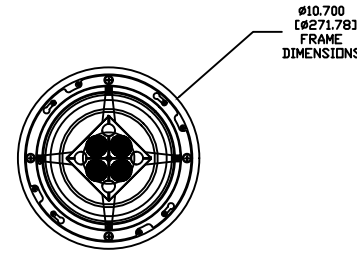
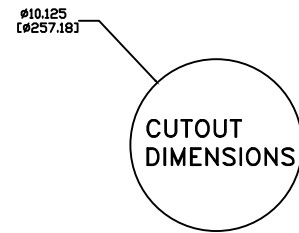
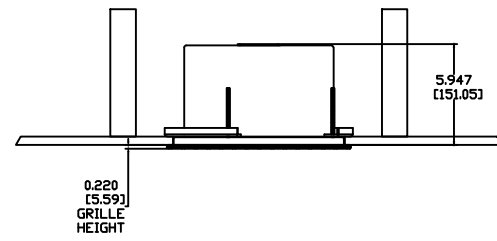
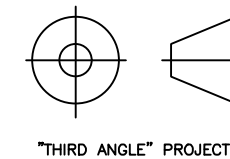


REVISIONS				
ECN	REV.	DESCRIPTION	DATE	APPROVED
	A	RELEASE FOR PRODUCTION	03-13-12	
	B	REPOSITION WOOFER BAFFLE	08-14-12	
	E	PCB CHANGE	01-25-13	
	F	WAS: GRILLE HEIGHT 0.126" (3MM) IS 0.240" (6.1MM)	02-19-15	
	G	HOUSING ADDED FEATURE ON BACK AND FRONT	02-23-15	D. MEI
	H	ADJUSTED BRACKET HOLE LOCATION	09-08-15	K. DUNLEA
	I	CHANGE TO EASY INSTALL METHOD WITH HMDP	10-06-16	
	J	TERMINAL CHANGED (TERM.010 OR TERM.011.WTG) DRIVER HOLE PATTERN AND CUTOUT UPDATED DRIVER RECESS INCREASED FROM 0.375" TO 0.500" GRILLE MAGNETS AND NOTCHES MOVED OUT BY 0.020" GRILLE FRAME HEIGHT INCREASED TO 0.330" GRILLE HEIGHT REDUCED FROM 0.240" TO 0.220"	08-27-18	
	K	DRIVER HOLE PATTERN UPDATED	09-14-18	



NOTES:

- MATERIAL - 5052 ALUMINUM
UNLESS OTHERWISE SPECIFIED
- FINISH:
GRILLE - MATTE WHITE
MOUNTING PLATE, GRILLE FRAME - STUDIO BLACK
HOUSING, BRACKETS - TBD
UNLESS OTHERWISE SPECIFIED



PROPRIETARY INFORMATION
THE DESIGNS, INFORMATION, AND DATA CONTAINED HEREIN ARE PROPRIETARY AND ARE SUBMITTED IN CONFIDENCE, AND SHALL NOT BE DISCLOSED, USED OR DUPLICATED IN WHOLE OR IN PART, FOR ANY PURPOSES WHATSOEVER, WITHOUT THE PRIOR WRITTEN PERMISSION OF JAMES LOUDSPEAKER LLC, 535 AIRPARK RD, NAPA, CA 94558. THIS LEGEND SHALL BE MARKED ON ANY REPRODUCTIONS HEREOF IN WHOLE OR IN PART. RECEIPT OF THIS DOCUMENT SHALL BE DEEMED TO BE AN ACCEPTANCE OF THE CONDITIONS SPECIFIED HEREIN.

JAMES LOUDSPEAKER	
QXC820	
EXTERNAL DIMENSIONS	
P/N: -	DWR #: 120313A00
REVISED BY: S. LDESCH	
DRAWN BY: M. PARK	FILE:
DATE: 03-13-12	SCALE:
APPROVED:	
DRAFTING APPROVED:	
DO NOT SCALE DRAWING	
DRAWING NOT TO BE USED FOR CNC	
TOLERANCES: ANG: ± = .5°	FRACT. ± = 1/32
DECIMALS: .XX ± = .01	.XXX ± = .005
REVISION: K	SHEET 1 OF 12