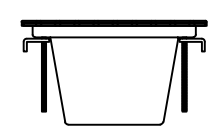
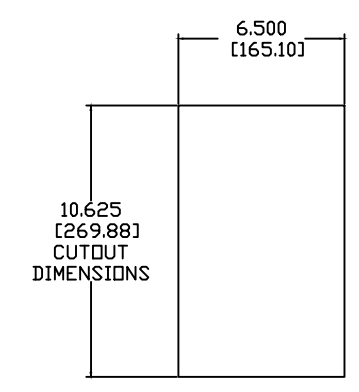
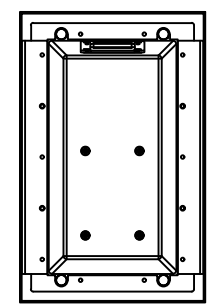
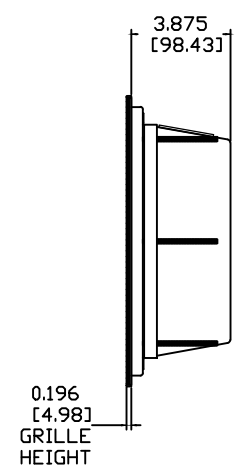
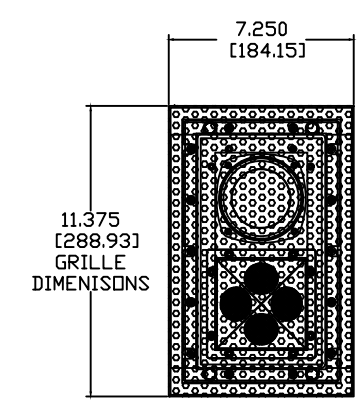
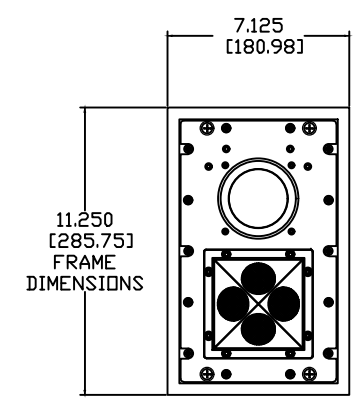
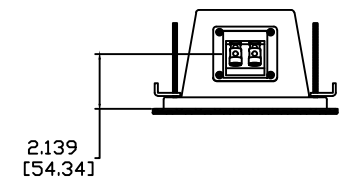
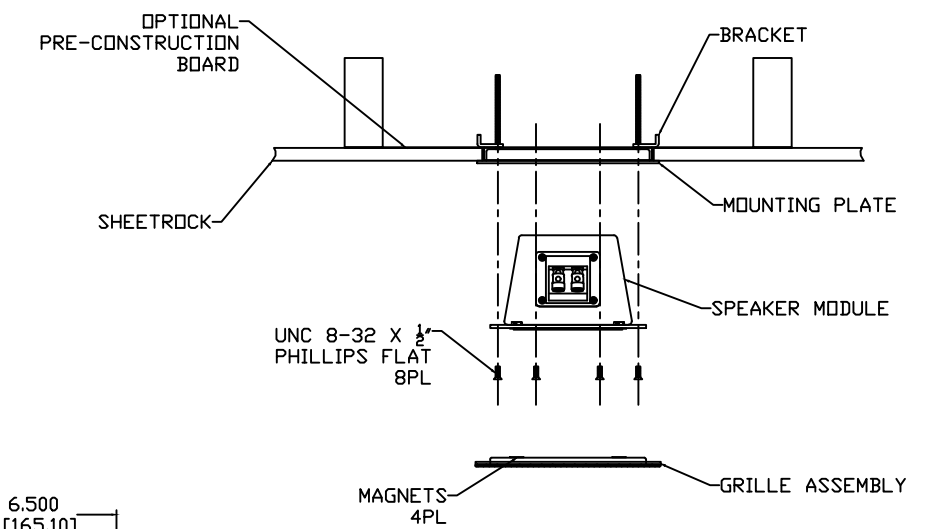


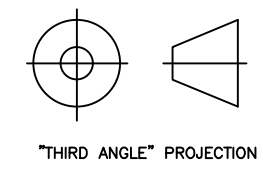
REVISIONS				
ECN	REV.	DESCRIPTION	DATE	APPROVED
19004	A	RELEASE FOR PRODUCTION	06-27-19	
21019	B	UPDATED MAGNET HOLE DIAMETER	04-14-21	

EXPLODED VIEW



NOTES:

- 1: MATERIAL - 5052 ALUMINUM
UNLESS OTHERWISE SPECIFIED
- 2: FINISH:
GRILLE - GLOSS WHITE
FRONT PLATE, MOUNTING PLATE, GRILLE FRAME - STUDIO BLACK POWDER COAT
HOUSING, BRACKET - TBD
UNLESS OTHERWISE SPECIFIED



PROPRIETARY INFORMATION		THE DESIGNS, INFORMATION, AND DATA CONTAINED HEREIN ARE PROPRIETARY AND ARE SUBMITTED IN CONFIDENCE, AND SHALL NOT BE DISCLOSED, USED OR DUPLICATED IN WHOLE OR IN PART, FOR ANY PURPOSES WHATSOEVER, WITHOUT THE PRIOR WRITTEN PERMISSION OF JAMES LOUDSPEAKER LLC, 2185 PARK PL, MINDEN, NV 89423. THIS LEGEND SHALL BE MARKED ON ANY REPRODUCTIONS HEREOF IN WHOLE OR IN PART. RECEIPT OF THIS DOCUMENT SHALL BE DEEMED TO BE AN ACCEPTANCE OF THE CONDITIONS SPECIFIED HEREIN.	
		JAMES LOUDSPEAKER	
		QX320	
		EXTERNAL DIMENSIONS	
		P/N: -	
		DWR #: 190627-S201	
		REVISED BY: M. GARCIA	
		DRAWN BY: S. LOESCH	
		DATE: 06-27-19	
		APPROVED:	
		DRAFTING APPROVED:	
		SCALE:	
		TOLERANCES: ANG: ± = .5° FRACT. ± = 1/32	
		DECIMALS: .XX ± = .01 .XXX ± = .005	
		REVISION: B	
		SHEET 1 OF 8	