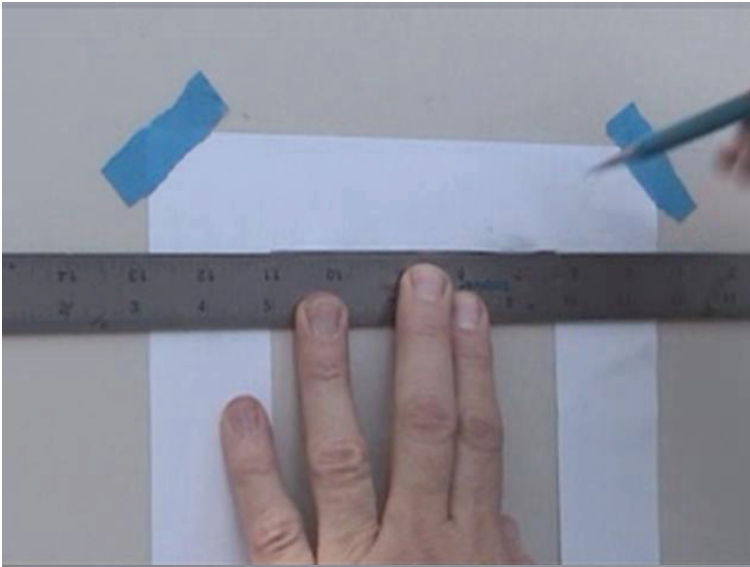


# JAMES BE/SDX SERIES INSTALL

Preliminary v1



Mark the wall with the required cutout dimensions for the James model you are installing. Keep the vertical lines plumb so the speaker will be straight when installed. A level should be used.



After Marking the wall, use your preferred method of cutting the hole, either using a power tool or by hand.



After making the cutout, test fit the speaker to make sure the speaker fits and does not bind.

While the speaker is in the wall, MARK EACH MOUNTING HOLE LOCATION with a pencil, marker or nail punch. These locations will be used later as a reference.



The wall board will not support a large BE series directly without additional support. So the cutout should be boxed in with 2x4 to provide something for the mounting screws to fasten to.

So cut 2 side 2x4s and 2 top/bottom 2x4s that just fit the height and width of the opening.

If the opening happens to be against a stud, then you may only need 3 sections of 2x4 to frame the opening.



You will need to hold these 2x4s while you screw them to the wall, so put a dry wall screw into each 2x4 to act as a “temporary handle”.



While holding the drywall screw “handle”, slide the 2x4s into each location.





While holding the drywall screw “handle”, screw through the drywall into the 2x4’s with dry wall screws. Be sure NOT to place screws where you previously marked the speaker mounting holes or you will not be able to mount the speaker later.

Once screwed in place, you can remove the temporary drywall screw “handles”.



Also, if you are fully boxing in the wall opening, you might want to drill a hole in the top 2x4 and fish your wire through so the final 2x4 can be placed.

Obviously, if your cable comes from the bottom, the hole should be placed in the bottom 2x4.



Shown here is the top 2x4 with the speaker wire fished out and the last drywall screw being placed to hold the 2x4. The “handle” screw is still in the top 2x4 and will be removed.



Connect the speaker wire to the speaker terminals observing polarity markings.



Place the speaker into the wall.

You may need to push some of the excess wire back into the rear cavity in order to get the speaker in place.

Once placed, you might want to check the vertical level and position before screwing in the screws to hold the speaker. As noted, the screws will be going into the 2x4s that have been added to frame the opening in the wall.