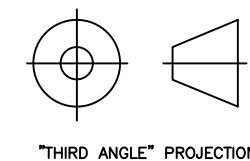
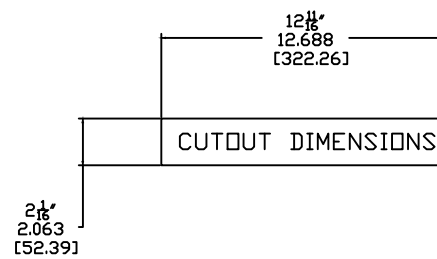
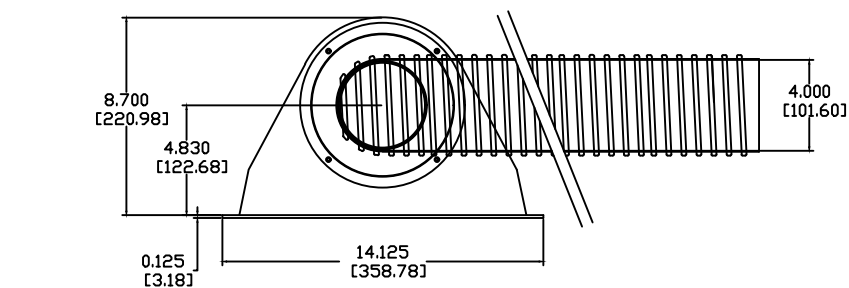
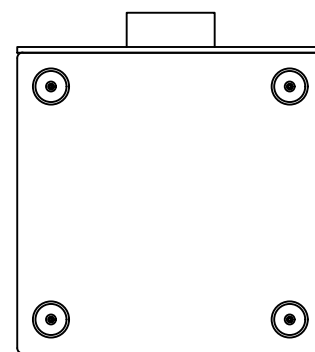
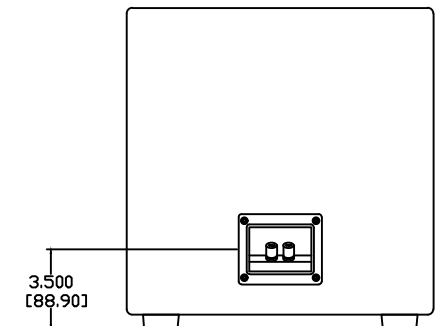
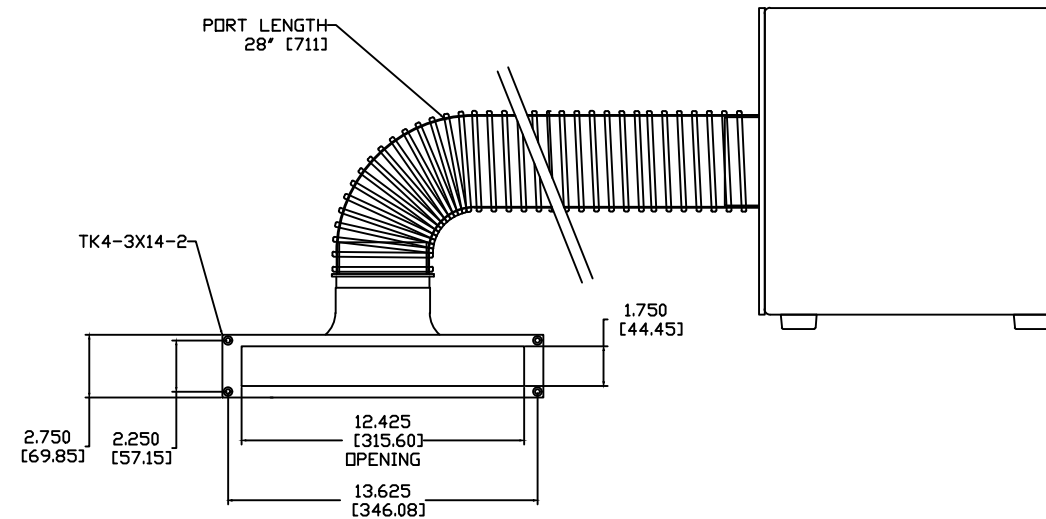
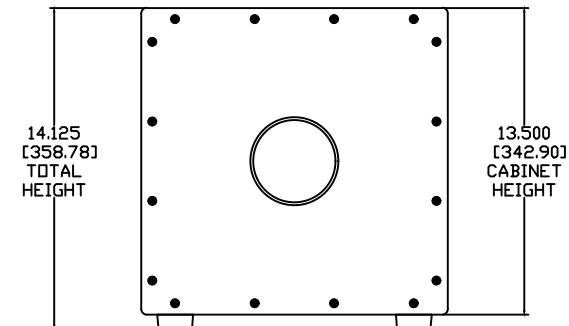
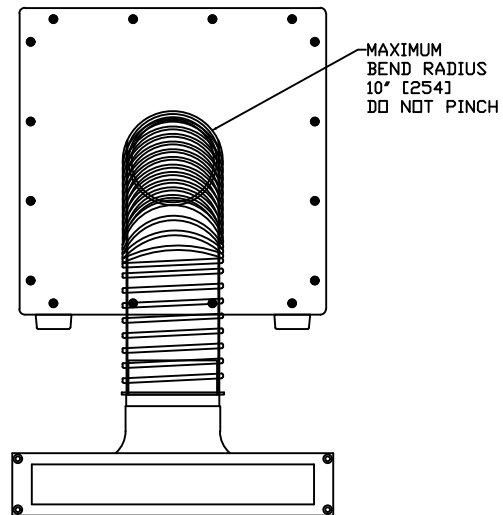
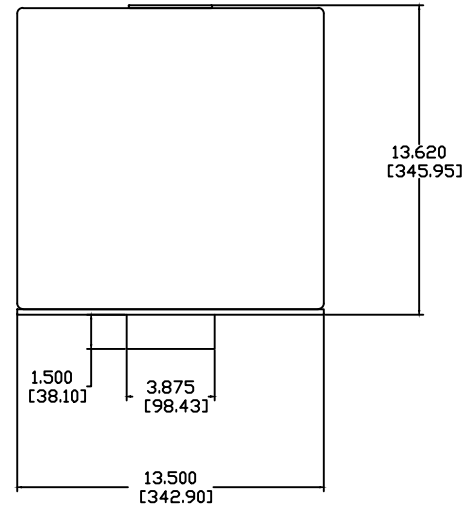


| REVISIONS | | | | |
|-----------|------|---------------------------------|----------|----------|
| ECN | REV. | DESCRIPTION | DATE | APPROVED |
| | A | RELEASE FOR PRODUCTION | 07-22-09 | |
| | B | DRAWING UPDATED | 11-02-18 | |
| 19025 | C | REVISED PORT PLATE HOLE PATTERN | 07-17-19 | |



"THIRD ANGLE" PROJECTION

NOTES:

- 1: MATERIAL - 5052 ALUMINUM UNLESS OTHERWISE SPECIFIED
- 2: FINISH: STUDIO BLACK POWDER COAT UNLESS OTHERWISE SPECIFIED
- 3: PORT LENGTH : 4" DIA. @ 28" LONG

PROPRIETARY INFORMATION
 THE DESIGNS, INFORMATION, AND DATA CONTAINED HEREIN ARE PROPRIETARY AND ARE SUBMITTED IN CONFIDENCE, AND SHALL NOT BE DISCLOSED, USED OR DUPLICATED IN WHOLE OR IN PART, FOR ANY PURPOSES WHATSOEVER, WITHOUT THE PRIOR WRITTEN PERMISSION OF JAMES LOUDSPEAKER LLC, 2185 PARK PL, MINDEN, NV 89423. THIS LEGEND SHALL BE MARKED ON ANY REPRODUCTIONS HEREOF IN WHOLE OR IN PART. RECEIPT OF THIS DOCUMENT SHALL BE DEEMED TO BE AN ACCEPTANCE OF THE CONDITIONS SPECIFIED HEREIN.

JAMES LOUDSPEAKER

1200PT-1M

EXTERNAL DIMENSIONS

P/N: - DWR #: 090930-B00

REVISED BY: S. LOESCH

DRAWN BY: M. PARK FILE:

DATE: 11-05-08 SCALE:

APPROVED:

DRAFTING APPROVED:

DO NOT SCALE DRAWING

DRAWING NOT TO BE USED FOR CNC

TOLERANCES: ANG: ± = .5° FRACT. ± = 1/32

DECIMALS: .XX ± = .01 .XXX ± = .005

REVISION: C

SHEET 1 OF 4